

Part #	Part Name	Qty.	Item#
EA900H	Honda 4 Stroke Engine	1	1
RT600	Throttle Assembly	1	2
RL500(H)*	Rattler Flex Hose	1	3
RL550*	Rattler Drive Cable (Not Pictured/inside hose)	1	4
RL250	Rattler Vibrator Head Assembly	1	5
TL650	Shoulder Strap Assembly	1	6
TL080	Kickstand Bracket Complete used for shoulder strap	1	7

\*Rattler flex hose and drive cable can be cut to specified length

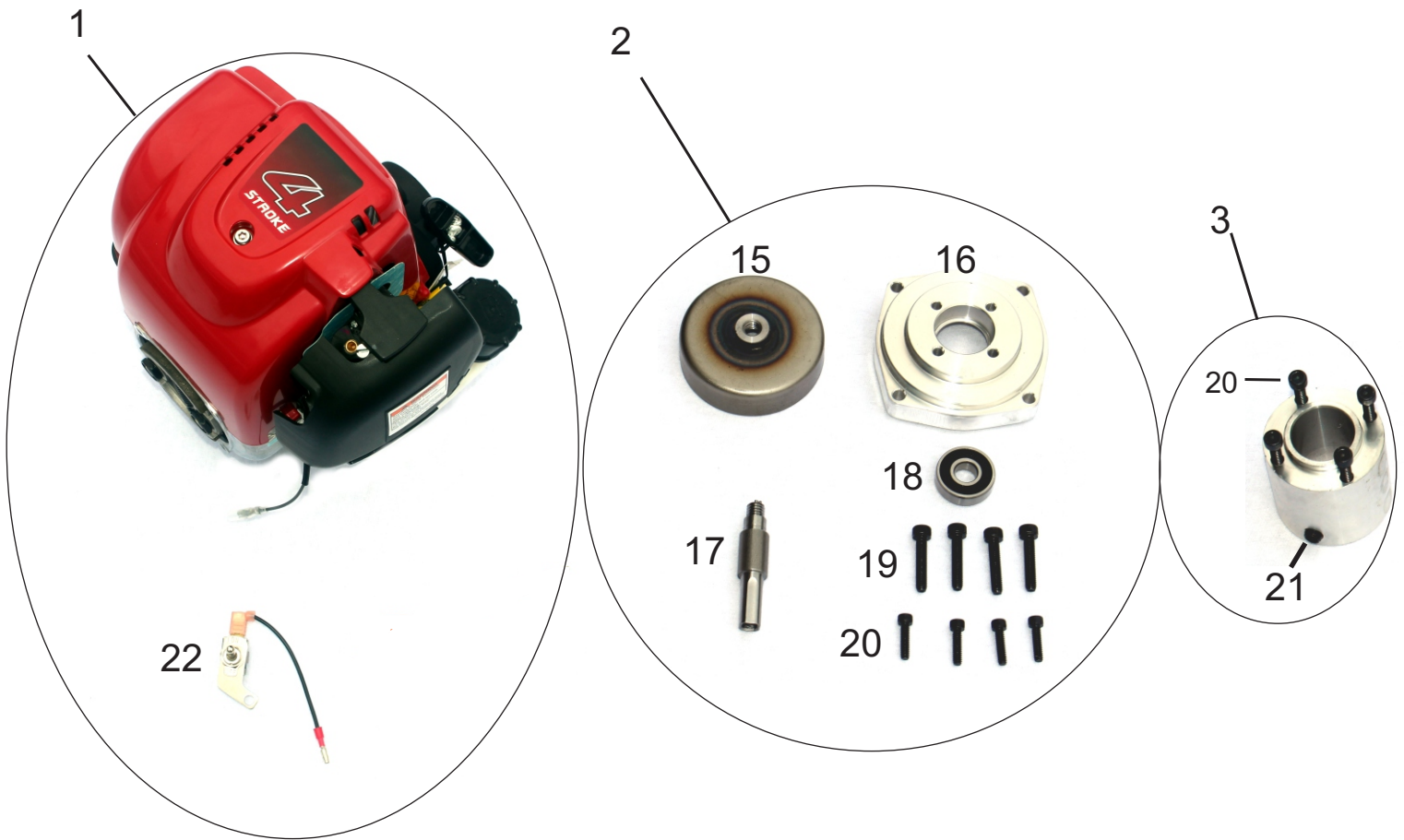
We now have a part called the Rattler Whip. This includes part# 3,4, &5. You can use your current Rattler engine and interchange the whips to get the desired length you need for the job!! Keep in mind that approximately 1 foot of usable length is taken up by the grip and throttle assembly. You should always "order up" a foot depending on usable length needed. You should order a 10' Rattler if you need 9' of usable length.

### Rattler Whip

Part#	Description	Part#	Description
RL304(H)	4'Rattler Whip	RL310(H)	10'Rattler Whip
RL305(H)	5'Rattler Whip	RL311(H)	11'Rattler Whip
RL306(H)	6'Rattler Whip	RL312(H)	12'Rattler Whip
RL307(H)	7'Rattler Whip	RL313(H)	13'Rattler Whip
RL308(H)	8'Rattler Whip	RL314(H)	14'Rattler Whip
RL309(H)	9'Rattler Whip		

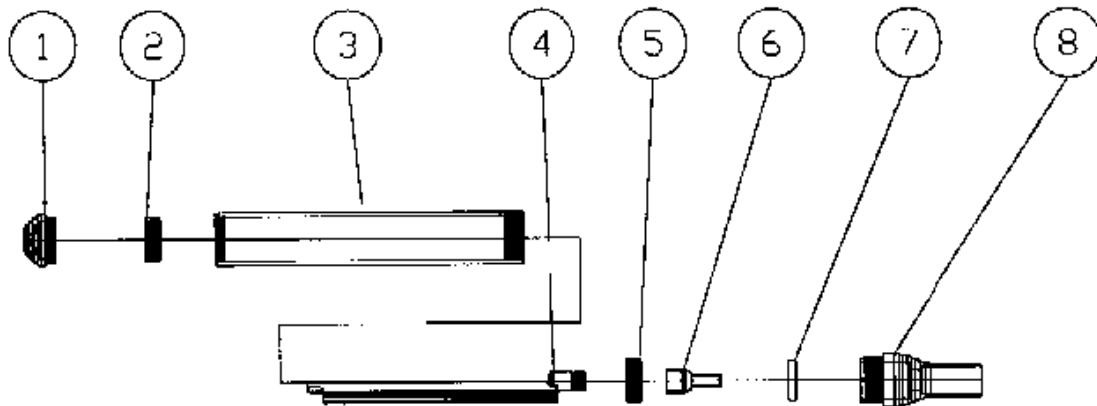
If your Rattler has an older 2-stroke Robin engine, you need to leave off the "H" when placing an order for a Rattler Whip or hose. The H denotes Rattlers with Honda engines.

Figure 1  
EA900H and TL324 (Honda Clutch Complete)



Item	Part Number	Description
1	EA900H	VS1,VSII, & Rattler Honda Engine with ON/OFF Switch
2	TL324	VSI,VSII, & Rattler Honda Clutch Complete
3	TL320	VSI & Rattler Clutch Adapter Nosepiece (VSI and Rattler Only)
15	TL316	VSI,VSII, & Rattler Honda Clutch Drum
16	TL317	VSI,VSII, & Rattler Honda Engine Clutch Adapter
17	TL319	VSI,VSII, & Rattler Honda Clutch Shaft
18	TL329	VSI,VSII, & Rattler Honda Clutch Bearing
19	TL314	VSI,VSII, & Rattler Honda Engine Mounting Screw
20	TL071	VSI,VSII, & Rattler Honda Clutch Adapter Mounting Screw
21	TL012	VSI & Rattler Clutch Adapter Nosepiece Set Screw 5/6-18 X 3/8
22	TL605	VSI,VSII, & Rattler Honda Engine ON/OFF Switch

## Rattler Vibrator Head Assembly



Part#	Part Name	Item#
RL0015	End Cap	1
RL0025	6003RS Bearing	2
RL0035	Vibrator Shaft Housing	3
RL0045	Vibrator Shaft	4
RL0065	Flex Shaft Connector	6
RL0075	Seal	7
<b>RL0085</b>	<b>Flex Shaft Housing Connector</b>	<b>8 (Not Sold Separately)</b>
RL250	Vibrator Assembly Complete	1-7
TL052	Vibrator Shaft 202 Bearing	5

Rattler Part#	Length
RL5104H	4' Rattler
RL5105H	5' Rattler
RL5106H	6' Rattler
RL5107H	7' Rattler
RL5108H	8' Rattler
RL5109H	9' Rattler
RL5110H	10' Rattler
RL5111H	11' Rattler
RL5112H	12' Rattler
RL5113H	13' Rattler
RL5114H	14' Rattler
RL5115H	15' Rattler
RL5116H	16' Rattler

Keep in mind that approximately 1 foot of usable length is taken up by the grip and throttle assembly. You should always "order up" a foot depending on usable length needed. You should order a 10' Rattler if you need 9' of usable length.

## **Rattler Hose and Cable Lengths**

<b>Rattler Length</b>	<b>Honda/ Robin 4 Stroke Hose</b>	<b>Robin 2 Stroke Hose</b>	<b>Cable Length</b>
<b>4'</b>	<b>28.25"</b>	<b>27.25"</b>	<b>40"</b>
<b>5'</b>	<b>40.25"</b>	<b>39.25"</b>	<b>52"</b>
<b>6'</b>	<b>52.25"</b>	<b>51.25"</b>	<b>64"</b>
<b>7'</b>	<b>64.25"</b>	<b>63.25"</b>	<b>76"</b>
<b>8'</b>	<b>76.25"</b>	<b>75.25"</b>	<b>88"</b>
<b>9'</b>	<b>88.25"</b>	<b>87.25"</b>	<b>100"</b>
<b>10'</b>	<b>100.25"</b>	<b>99.25"</b>	<b>112"</b>
<b>11'</b>	<b>112.25"</b>	<b>111.25"</b>	<b>124"</b>
<b>12'</b>	<b>124.25"</b>	<b>123.25"</b>	<b>136"</b>
<b>13'</b>	<b>136.25"</b>	<b>135.25"</b>	<b>148"</b>
<b>14'</b>	<b>148.25"</b>	<b>147.25"</b>	<b>160"</b>
<b>15'</b>	<b>160.25"</b>	<b>159.25"</b>	<b>172"</b>
<b>16'</b>	<b>172.25"</b>	<b>171.25"</b>	<b>184"</b>

**The easiest way to determine the length of your Rattler is by measuring the drive cable and comparing to chart above.**

**If you are measuring your Rattler when assembled, the length of the hose will be about 3 inches shorter than the hose lengths above. This is because about 1 ½" of the hose goes up into the engine end and about 1 ½" goes into the vibrator head. The hose length you measure will help you determine the Rattler length that you have. Example: You measure your hose and find that it is roughly 25.25 inches when assembled. This means you have a 4' Honda Rattler. We will cut the hose to a length of 28.25 inches.**